

NOT FOR CONSTRUCTION

REV	ISSUED FOR RMA CONSENT	SS	AC	JP	DATE
C	ISSUED FOR RMA CONSENT	SS	AC	JP	19.08.22
B	ISSUED FOR CONSENT - DRAFT	SS	KW	JP	20.04.22
A	ISSUED FOR CONSENT - DRAFT	SS	KW	JP	09.12.21
		DRN	CHK	APP	DATE

SURVEYED	DESIGNED	DRAWN	CAD REVIEW	DESIGN CHECK	DESIGN REVIEW	APPROVED
	Steve Muller	Steve Sutton	Steve Sutton	Jamie Povall	Keith Weale	Jamie Povall
	18.06.21	18.06.21	08.12.21	07.12.21	08.12.21	19.08.22

Client:



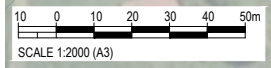

WAKA KOTAHI  
 OTAKI TO NORTH OF LEVIN PROJECT  
 DRAINAGE  
 SITE LAYOUT PLAN

Status Stamp	<b>FOR CONSENT</b>
Date Stamp	<b>19.08.22</b>
Scale	NTS
Drawing No.	310203848-01-300-C0100
Rev.	<b>C</b>



**LEGEND**

—	EXISTING PROPERTY BOUNDARY	—	EXISTING STREAM	⬇	HEADWALL WITH RIP RAP
- - -	PROPOSED DESIGNATION BOUNDARY	⬇	IMPACTED STREAM	⊗	SCRUFFY DOME
⬇	REALIGNED STREAM (INDICATIVE DESIGN)	⬇	CLEAN OPEN CHANNEL	⊙	MANHOLE
⬇	CLEAN LINED CHANNEL	⊙	ROAD RUNOFF CHANNEL	⊙	CATCH PIT
⬇	VEGETATED SWALE	⊙	CULVERT WITH ID IF SHOWN	⊙	MANHOLE CATCH PIT
⬇	STORMWATER PIPE	⊙	SCOUR PROTECTION	⊙	SPOIL SITE OPTION (INDICATIVE EXTENT)
⬇	POND INLET/OUTLET	⊙	MATERIAL SUPPLY SITE (INDICATIVE EXTENT)	⊙	CUT AREA
⬇	SWALE TO SWALE	⊙	FILL AREA	⊙	POSSIBLE PROPERTY ACCESS ROUTE
⬇	CULVERT WITH ID	⊙		⊙	



**NOT FOR CONSTRUCTION**

REV	DESCRIPTION	DRN	CHK	APP	DATE
E	VARIOUS UPDATES - ISSUED FOR RMA CONSENT	MH	JP	JP	10.10.22
D	ISSUED FOR RMA CONSENT	SS	AC	JP	19.08.22
C	ISSUED FOR CONSENT - DRAFT	SS	AC	JP	20.04.22
B	ISSUED FOR CONSENT - DRAFT	SS	AC	JP	09.12.21
A	ISSUED FOR DBC	SS	AC	JP	18.06.21

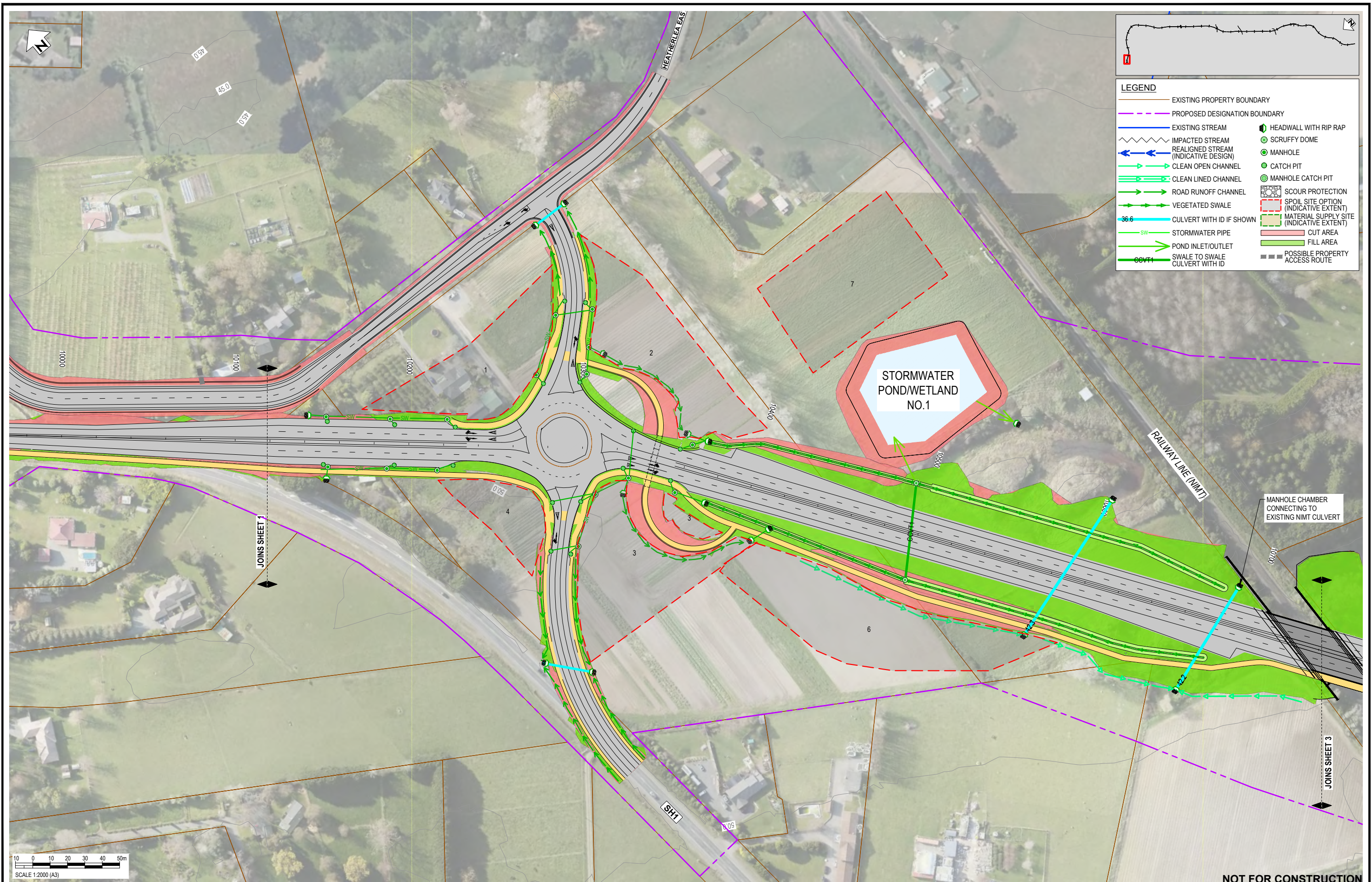
SURVEYED	DESIGNED	DRAWN	CAD REVIEW	DESIGN CHECK	DESIGN REVIEW	APPROVED
	Nolan Naidoo	Gavin Smit	Steve Sutton	Nick Keenan	Andrew Craig	Jamie Povall
	18.06.21	18.06.21	18.06.21	14.04.22	15.04.22	10.10.22

Client:




WAKA KOTAHI  
 OTAKI TO NORTH OF LEVIN PROJECT  
 DRAINAGE LAYOUT PLAN - INDICATIVE  
 SHEET 1

Status Stamp	<b>FOR CONSENT</b>
Date Stamp	<b>10.10.22</b>
Scale	1 : 2000 (A3)
Drawing No.	310203848-01-300-C1000
Rev.	<b>E</b>



**LEGEND**

—	EXISTING PROPERTY BOUNDARY	—	EXISTING STREAM	⬇	HEADWALL WITH RIP RAP
- - -	PROPOSED DESIGNATION BOUNDARY	⋯	IMPACTED STREAM	⊕	SCRUFFY DOME
→	REALIGNED STREAM (INDICATIVE DESIGN)	→	CLEAN OPEN CHANNEL	⊙	MANHOLE
→	CLEAN LINED CHANNEL	→	ROAD RUNOFF CHANNEL	⊙	CATCH PIT
→	VEGETATED SWALE	→	CULVERT WITH ID IF SHOWN	⊙	MANHOLE CATCH PIT
→	STORMWATER PIPE	→	STORMWATER PIPE	⊙	SCOUR PROTECTION
→	POND INLET/OUTLET	→	POND INLET/OUTLET	⊙	SPOIL SITE OPTION (INDICATIVE EXTENT)
→	SWALE TO SWALE	→	CULVERT WITH ID	⊙	MATERIAL SUPPLY SITE (INDICATIVE EXTENT)
				⊙	CUT AREA
				⊙	FILL AREA
				⊙	POSSIBLE PROPERTY ACCESS ROUTE

REV	DESCRIPTION	DRN	CHK	APP	DATE
E	VARIOUS UPDATES - ISSUED FOR RMA CONSENT	MH	JP	JP	10.10.22
D	ISSUED FOR RMA CONSENT	SS	AC	JP	19.09.22
C	ISSUED FOR CONSENT - DRAFT	SS	AC	JP	20.04.22
B	ISSUED FOR CONSENT - DRAFT	SS	AC	JP	09.12.21
A	ISSUED FOR DBC	SS	AC	JP	18.06.21

SURVEYED	DESIGNED	DRAWN	CAD REVIEW	DESIGN CHECK	DESIGN REVIEW	APPROVED
	Nolan Naidoo	Gavin Smit	Steve Sutton	Nick Keenan	Andrew Craig	Jamie Povall
	18.06.21	18.06.21	18.06.21	14.04.22	15.04.22	10.10.22

Client:




WAKA KOTAHI  
OTAKI TO NORTH OF LEVIN PROJECT

DRAINAGE LAYOUT PLAN - INDICATIVE  
SHEET 2

Status Stamp	<b>FOR CONSENT</b>
Date Stamp	<b>10.10.22</b>
Scale	1 : 2000 (A3)
Drawing No.	310203848-01-300-C1001
Rev.	<b>E</b>



**LEGEND**

—	EXISTING PROPERTY BOUNDARY	—	EXISTING STREAM	⊙	HEADWALL WITH RIP RAP
- - -	PROPOSED DESIGNATION BOUNDARY	⊙	IMPACTED STREAM	⊙	SCRUFFY DOME
⊙	REALIGNED STREAM (INDICATIVE DESIGN)	⊙	CLEAN OPEN CHANNEL	⊙	MANHOLE
⊙	CLEAN LINED CHANNEL	⊙	ROAD RUNOFF CHANNEL	⊙	CATCH PIT
⊙	VEGETATED SWALE	⊙	CULVERT WITH ID IF SHOWN	⊙	MANHOLE CATCH PIT
⊙	STORMWATER PIPE	⊙	SCOUR PROTECTION	⊙	SPOIL SITE OPTION (INDICATIVE EXTENT)
⊙	POND INLET/OUTLET	⊙	CUT AREA	⊙	MATERIAL SUPPLY SITE (INDICATIVE EXTENT)
⊙	SWALE TO SWALE CULVERT WITH ID	⊙	FILL AREA	⊙	POSSIBLE PROPERTY ACCESS ROUTE

SCALE 1:2000 (A3)

10 0 10 20 30 40 50m

REV	DESCRIPTION	DRN	CHK	APP	DATE
E	VARIOUS UPDATES - ISSUED FOR RMA CONSENT	MH	JP	JP	10.10.22
D	ISSUED FOR RMA CONSENT	SS	AC	JP	19.09.22
C	ISSUED FOR CONSENT - DRAFT	SS	AC	JP	20.04.22
B	ISSUED FOR CONSENT - DRAFT	SS	AC	JP	09.12.21
A	ISSUED FOR DBC	SS	AC	JP	18.06.21

SURVEYED	DESIGNED	DRAWN	CAD REVIEW	DESIGN CHECK	DESIGN REVIEW	APPROVED
	Nolan Naidoo	Gavin Smit	Steve Sutton	Nick Keenan	Andrew Craig	Jamie Povall
	18.06.21	18.06.21	18.06.21	14.04.22	15.04.22	10.10.22

Client:



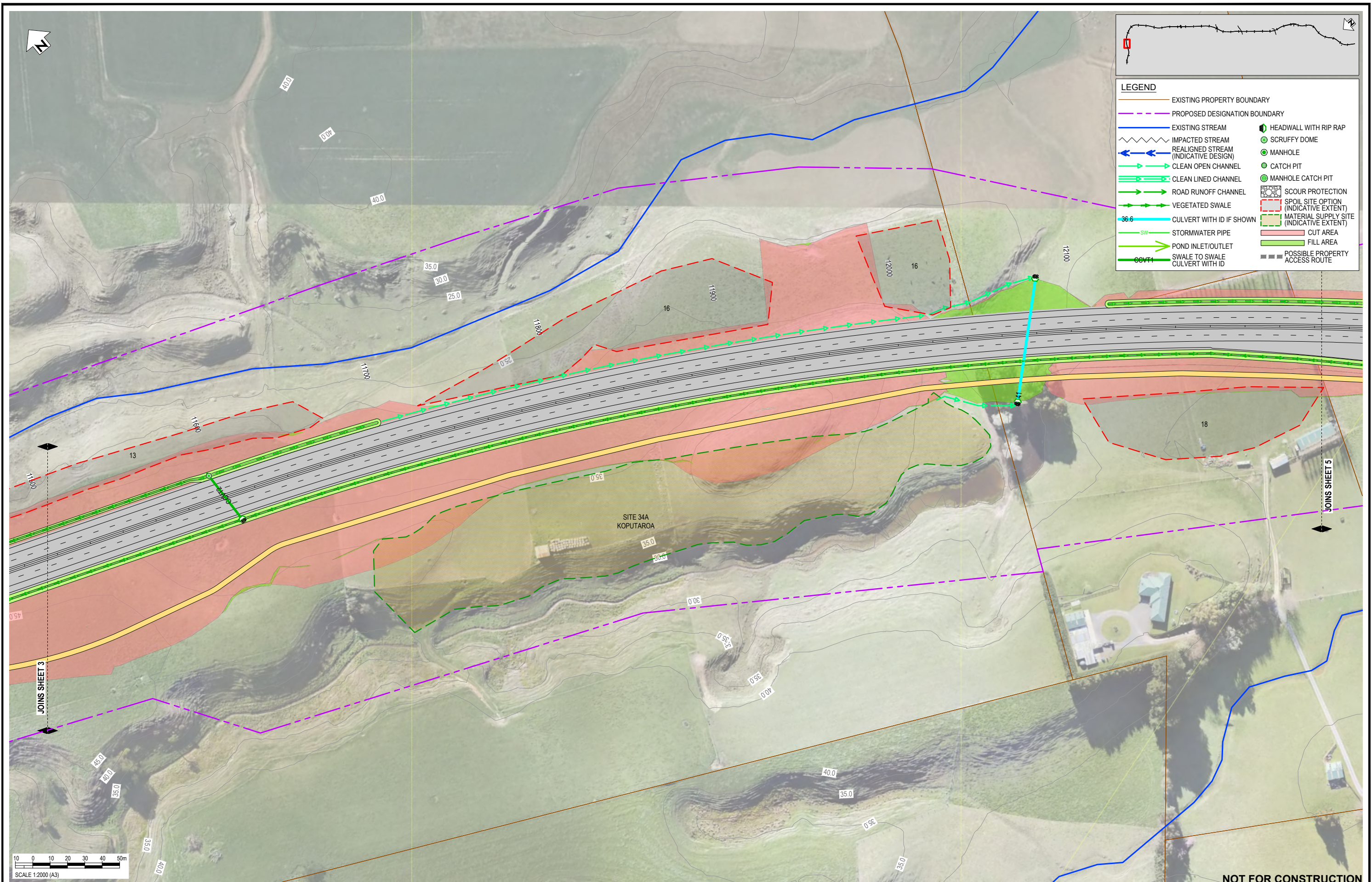

WAKA KOTAHI  
OTAKI TO NORTH OF LEVIN PROJECT

DRAINAGE LAYOUT PLAN - INDICATIVE  
SHEET 3

NOT FOR CONSTRUCTION

Status Stamp	<b>FOR CONSENT</b>
Date Stamp	<b>10.10.22</b>
Scale	1 : 2000 (A3)
Drawing No.	310203848-01-300-C1002
Rev.	<b>E</b>

pw:\stntec-ap-pw-bentley.com\stntec-ap-pw-01\Documents\New Zealand Clients\NZTA (New Zealand Transport Agency)\310203848 - Otaki to North of Levin DBC01 - O2NL300 - Stormwater\310203848-01-300-C1002



**LEGEND**

—	EXISTING PROPERTY BOUNDARY	—	EXISTING STREAM	⬇	HEADWALL WITH RIP RAP
- - -	PROPOSED DESIGNATION BOUNDARY	⬇	IMPACTED STREAM	⊗	SCRUFFY DOME
⬇	REALIGNED STREAM (INDICATIVE DESIGN)	⬇	CLEAN OPEN CHANNEL	⊙	MANHOLE
⬇	CLEAN LINED CHANNEL	⬇	ROAD RUNOFF CHANNEL	⊙	CATCH PIT
⬇	VEGETATED SWALE	⬇	SCOUR PROTECTION	⊙	MANHOLE CATCH PIT
36.6	CULVERT WITH ID IF SHOWN	⬇	SPOIL SITE OPTION (INDICATIVE EXTENT)	⊙	MATERIAL SUPPLY SITE (INDICATIVE EXTENT)
SW	STORMWATER PIPE	⬇	CUT AREA	⬇	FILL AREA
⬇	POND INLET/OUTLET	⬇	POSSIBLE PROPERTY ACCESS ROUTE		
⬇	SWALE TO SWALE CULVERT WITH ID				

REV	DESCRIPTION	DRN	CHK	APP	DATE
E	VARIOUS UPDATES - ISSUED FOR RMA CONSENT	MH	JP	JP	10.10.22
D	ISSUED FOR RMA CONSENT	SS	AC	JP	19.08.22
C	ISSUED FOR CONSENT - DRAFT	SS	AC	JP	20.04.22
B	ISSUED FOR CONSENT - DRAFT	SS	AC	JP	09.12.21
A	ISSUED FOR DBC	SS	AC	JP	18.06.21

SURVEYED	DESIGNED	DRAWN	CAD REVIEW	DESIGN CHECK	DESIGN REVIEW	APPROVED
	Nolan Naidoo	Gavin Smit	Steve Sutton	Nick Keenan	Andrew Craig	Jamie Povall
	18.06.21	18.06.21	18.06.21	14.04.22	15.04.22	10.10.22

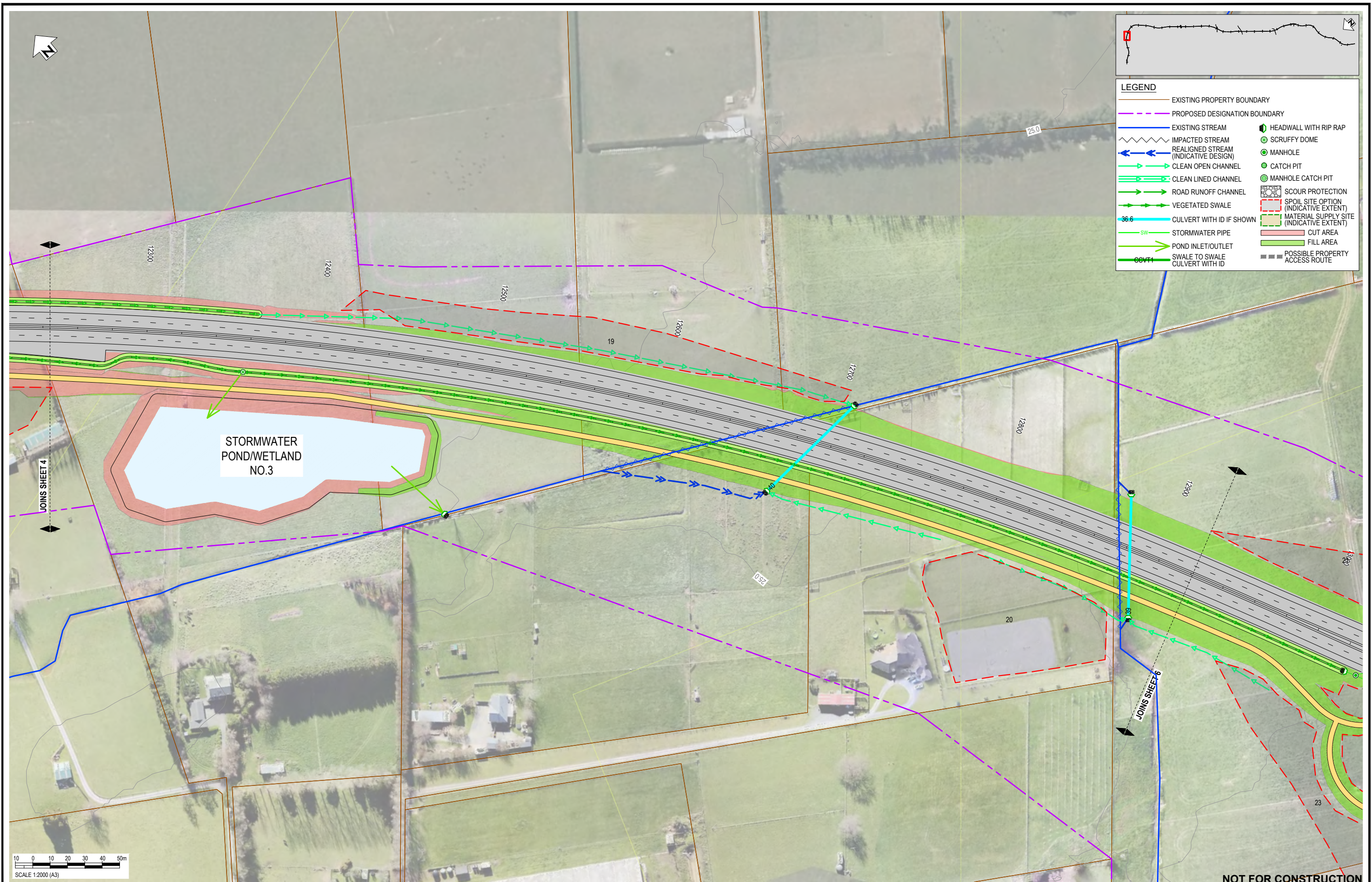
Client:




WAKA KOTAHI  
OTAKI TO NORTH OF LEVIN PROJECT

DRAINAGE LAYOUT PLAN - INDICATIVE  
SHEET 4

Status Stamp	<b>FOR CONSENT</b>
Date Stamp	<b>10.10.22</b>
Scale	1 : 2000 (A3)
Drawing No.	310203848-01-300-C1003
Rev.	<b>E</b>



REV	DESCRIPTION	DRN	CHK	APP	DATE
E	VARIOUS UPDATES - ISSUED FOR RMA CONSENT	MH	JP	JP	10.10.22
D	ISSUED FOR RMA CONSENT	SS	AC	JP	19.08.22
C	ISSUED FOR CONSENT - DRAFT	SS	AC	JP	20.04.22
B	ISSUED FOR CONSENT - DRAFT	SS	AC	JP	09.12.21
A	ISSUED FOR DBC	SS	AC	JP	18.06.21

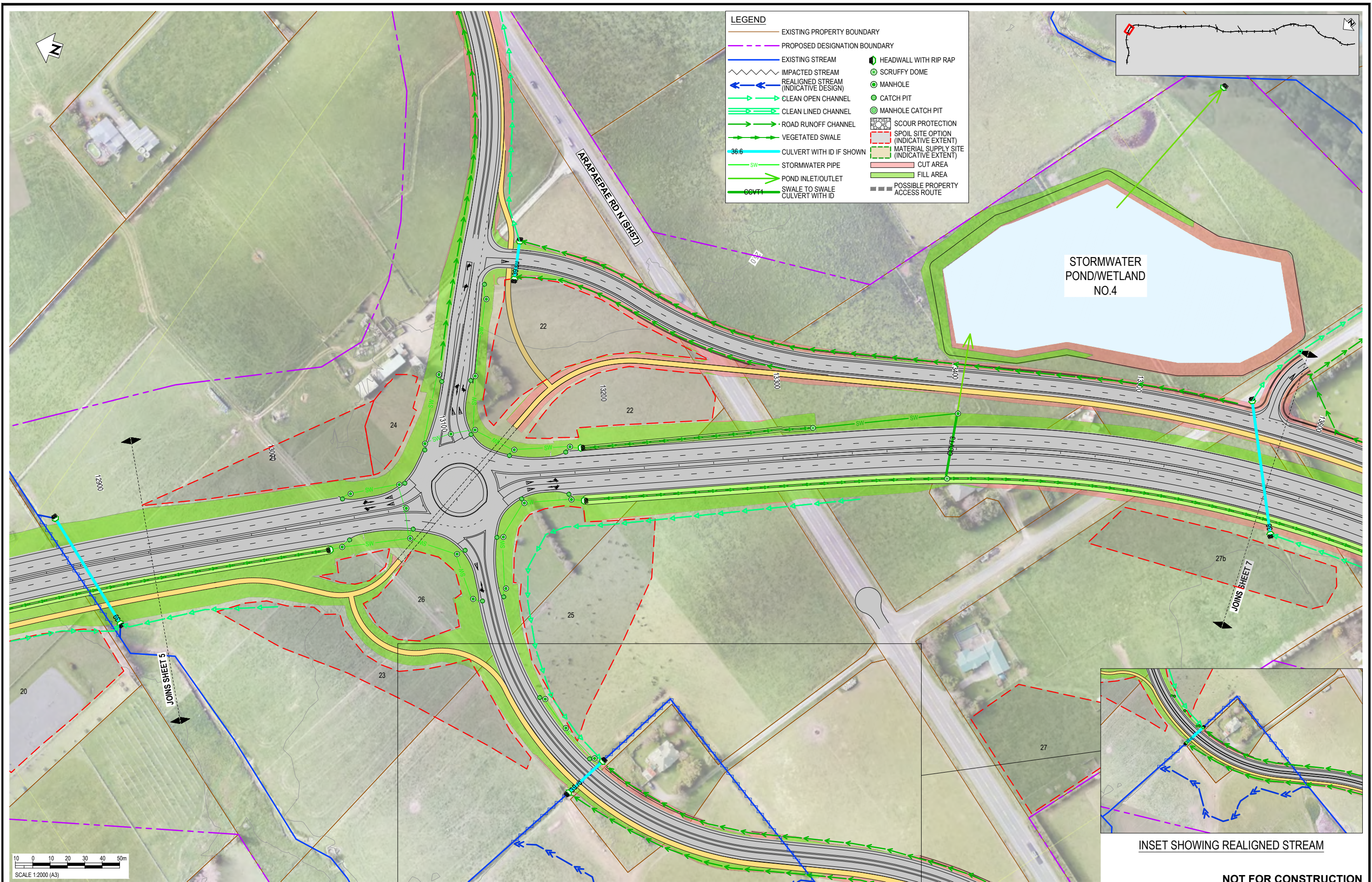
SURVEYED	DESIGNED	DRAWN	CAD REVIEW	DESIGN CHECK	DESIGN REVIEW	APPROVED
	Nolan Naidoo	Gavin Smit	Steve Sutton	Nick Keenan	Andrew Craig	Jamie Povall
	18.06.21	18.06.21	18.06.21	14.04.22	15.04.22	10.10.22

Client:




WAKA KOTAHI  
 OTAKI TO NORTH OF LEVIN PROJECT  
 DRAINAGE LAYOUT PLAN - INDICATIVE  
 SHEET 5

Status Stamp	<b>FOR CONSENT</b>
Date Stamp	<b>10.10.22</b>
Scale	1 : 2000 (A3)
Drawing No.	310203848-01-300-C1004
Rev.	<b>E</b>



REV	DESCRIPTION	DRN	CHK	APP	DATE
E	VARIOUS UPDATES - ISSUED FOR RMA CONSENT	MH	JP	JP	10.10.22
D	ISSUED FOR RMA CONSENT	SS	AC	JP	19.08.22
C	ISSUED FOR CONSENT - DRAFT	SS	AC	JP	20.04.22
B	ISSUED FOR CONSENT - DRAFT	SS	AC	JP	09.12.21
A	ISSUED FOR DBC	SS	AC	JP	18.06.21

SURVEYED	DESIGNED	DRAWN	CAD REVIEW	DESIGN CHECK	DESIGN REVIEW	APPROVED
	Nolan Naidoo	Gavin Smit	Steve Sutton	Nick Keenan	Andrew Craig	Jamie Povall
	18.06.21	18.06.21	18.06.21	14.04.22	15.04.22	10.10.22

Client:

WAKA KOTAHI  
 OTAKI TO NORTH OF LEVIN PROJECT  
 DRAINAGE LAYOUT PLAN - INDICATIVE  
 SHEET 6

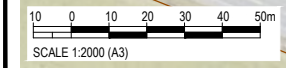
Status Stamp	<b>FOR CONSENT</b>
Date Stamp	<b>10.10.22</b>
Scale	1 : 2000 (A3)
Drawing No.	310203848-01-300-C1005
Rev.	<b>E</b>





**LEGEND**

—	EXISTING PROPERTY BOUNDARY	—	EXISTING STREAM	⊕	HEADWALL WITH RIP RAP
- - -	PROPOSED DESIGNATION BOUNDARY	⊕	IMPACTED STREAM	⊕	SCRUFFY DOME
—	REALIGNED STREAM (INDICATIVE DESIGN)	⊕	CLEAN OPEN CHANNEL	⊕	MANHOLE
—	CLEAN LINED CHANNEL	⊕	CLEAN LINED CHANNEL	⊕	CATCH PIT
—	ROAD RUNOFF CHANNEL	⊕	VEGETATED SWALE	⊕	MANHOLE CATCH PIT
—	CULVERT WITH ID IF SHOWN	⊕	STORMWATER PIPE	⊕	SCOUR PROTECTION
—	POND INLET/OUTLET	⊕	SWALE TO SWALE	⊕	SPOIL SITE OPTION (INDICATIVE EXTENT)
—	CULVERT WITH ID	⊕	POSSIBLE PROPERTY ACCESS ROUTE	⊕	MATERIAL SUPPLY SITE (INDICATIVE EXTENT)
—		⊕		⊕	CUT AREA
—		⊕		⊕	FILL AREA
—		⊕		⊕	



**NOT FOR CONSTRUCTION**

REV	REVISIONS	DRN	CHK	APP	DATE
E	VARIOUS UPDATES - ISSUED FOR RMA CONSENT	MH	JP	JP	10.10.22
D	ISSUED FOR RMA CONSENT	SS	AC	JP	19.08.22
C	ISSUED FOR CONSENT - DRAFT	SS	AC	JP	20.04.22
B	ISSUED FOR CONSENT - DRAFT	SS	AC	JP	09.12.21
A	ISSUED FOR DBC	SS	AC	JP	18.06.21

SURVEYED	DESIGNED	DRAWN	CAD REVIEW	DESIGN CHECK	DESIGN REVIEW	APPROVED
	Nolan Naidoo	Gavin Smit	Steve Sutton	Nick Keenan	Andrew Craig	Jamie Povall
	18.06.21	18.06.21	18.06.21	14.04.22	15.04.22	10.10.22

Client:




WAKA KOTAHI  
OTAKI TO NORTH OF LEVIN PROJECT

DRAINAGE LAYOUT PLAN - INDICATIVE  
SHEET 7

Status Stamp	<b>FOR CONSENT</b>
Date Stamp	<b>10.10.22</b>
Scale	1 : 2000 (A3)
Drawing No.	310203848-01-300-C1006
Rev.	<b>E</b>

pw:\stntec-ap-pw-bentley.com\stntec-ap-pw-01\Documents\New Zealand Clients\NZTA (New Zealand Transport Agency)\310203848 - Otaki to North of Levin DBC\01 - O2NL\300 - Stormwater\310203848-01-300-C1006



**LEGEND**

—	EXISTING PROPERTY BOUNDARY	—	PROPOSED DESIGNATION BOUNDARY
—	EXISTING STREAM	●	HEADWALL WITH RIP RAP
~	IMPACTED STREAM	⊗	SCRUFFY DOME
←	REALIGNED STREAM (INDICATIVE DESIGN)	○	MANHOLE
→	CLEAN OPEN CHANNEL	○	CATCH PIT
→	CLEAN LINED CHANNEL	○	MANHOLE CATCH PIT
→	ROAD RUNOFF CHANNEL	⊗	SCOUR PROTECTION
→	VEGETATED SWALE	⊗	SPOIL SITE OPTION (INDICATIVE EXTENT)
36.6	CULVERT WITH ID IF SHOWN	⊗	MATERIAL SUPPLY SITE (INDICATIVE EXTENT)
SW	STORMWATER PIPE	■	CUT AREA
→	POND INLET/OUTLET	■	FILL AREA
CVT1	SWALE TO SWALE CULVERT WITH ID	■	POSSIBLE PROPERTY ACCESS ROUTE

SCALE 1:2000 (A3)

10	0	10	20	30	40	50m
----	---	----	----	----	----	-----

REV	DESCRIPTION	DRN	CHK	APP	DATE
E	VARIOUS UPDATES - ISSUED FOR RMA CONSENT	MH	JP	JP	10.10.22
D	ISSUED FOR RMA CONSENT	SS	AC	JP	19.08.22
C	ISSUED FOR CONSENT - DRAFT	SS	AC	JP	20.04.22
B	ISSUED FOR CONSENT - DRAFT	SS	AC	JP	09.12.21
A	ISSUED FOR DBC	SS	AC	JP	18.06.21

SURVEYED	DESIGNED	DRAWN	CAD REVIEW	DESIGN CHECK	DESIGN REVIEW	APPROVED
	Nolan Naidoo	Gavin Smit	Steve Sutton	Nick Keenan	Andrew Craig	Jamie Povall
	18.06.21	18.06.21	18.06.21	14.04.22	15.04.22	10.10.22

Client:

WAKA KOTAHI  
OTAKI TO NORTH OF LEVIN PROJECT

DRAINAGE LAYOUT PLAN - INDICATIVE  
SHEET 8

Status Stamp	<b>FOR CONSENT</b>
Date Stamp	<b>10.10.22</b>
Scale	1 : 2000 (A3)
Drawing No.	310203848-01-300-C1007
Rev.	<b>E</b>

pw:\stantec-ap-pw-bentley.com.stantec-ap-pw-01\Documents\New Zealand Clients\NZTA (New Zealand Transport Agency)\310203848 - Otaki to North of Levin DBC\01 - O2NL\300 - Stormwater\310203848-01-300-C1007



**LEGEND**

—	EXISTING PROPERTY BOUNDARY	—	EXISTING STREAM	●	HEADWALL WITH RIP RAP
- - -	PROPOSED DESIGNATION BOUNDARY	~	IMPACTED STREAM	⊗	SCRUFFY DOME
—	REALIGNED STREAM (INDICATIVE DESIGN)	—	CLEAN OPEN CHANNEL	○	MANHOLE
—	CLEAN LINED CHANNEL	—	ROAD RUNOFF CHANNEL	○	CATCH PIT
—	VEGETATED SWALE	—	CULVERT WITH ID IF SHOWN	○	MANHOLE CATCH PIT
—	STORMWATER PIPE	—	SW	—	SCOUR PROTECTION
—	POND INLET/OUTLET	—	COVT1	—	SPOIL SITE OPTION (INDICATIVE EXTENT)
—	SWALE TO SWALE	—		—	MATERIAL SUPPLY SITE (INDICATIVE EXTENT)
—	CULVERT WITH ID	—		—	CUT AREA
		—		—	FILL AREA
		—		—	POSSIBLE PROPERTY ACCESS ROUTE

10 0 10 20 30 40 50m  
SCALE 1:2000 (A3)

NOT FOR CONSTRUCTION

REV	REVISIONS	DRN	CHK	APP	DATE
E	VARIOUS UPDATES - ISSUED FOR RMA CONSENT	MH	JP	JP	10.10.22
D	ISSUED FOR RMA CONSENT	SS	AC	JP	19.08.22
C	ISSUED FOR CONSENT - DRAFT	SS	AC	JP	20.04.22
B	ISSUED FOR CONSENT - DRAFT	SS	AC	JP	09.12.21
A	ISSUED FOR DBC	SS	AC	JP	18.06.21

SURVEYED	DESIGNED	DRAWN	CAD REVIEW	DESIGN CHECK	DESIGN REVIEW	APPROVED
	Nolan Naidoo	Gavin Smit	Steve Sutton	Nick Keenan	Andrew Craig	Jamie Povall
	18.06.21	18.06.21	18.06.21	14.04.22	15.04.22	10.10.22



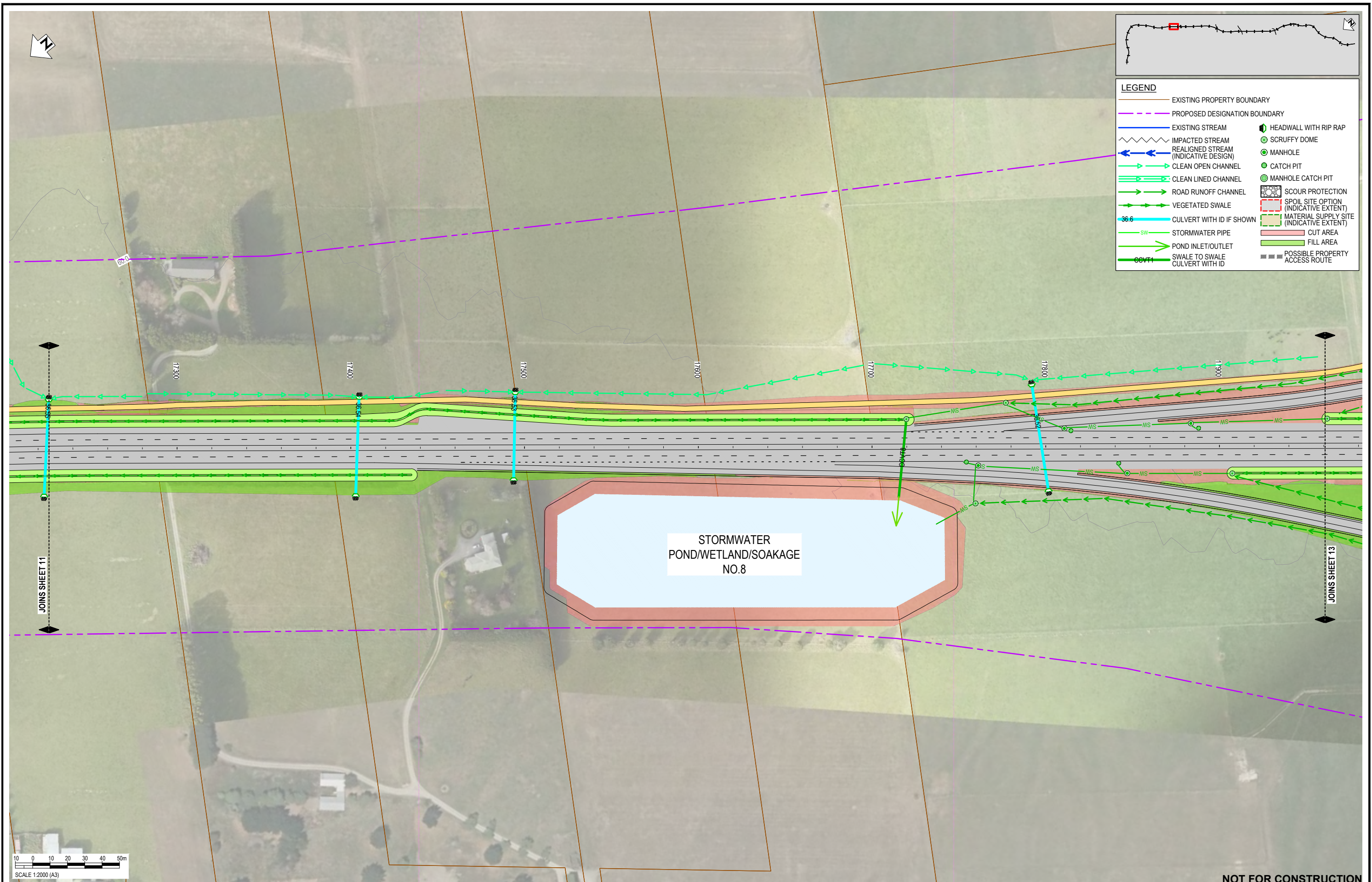
Client: WAKA KOTAHI  
OTAKI TO NORTH OF LEVIN PROJECT  
DRAINAGE LAYOUT PLAN - INDICATIVE  
SHEET 9

Status Stamp	<b>FOR CONSENT</b>
Date Stamp	<b>10.10.22</b>
Scale	1 : 2000 (A3)
Drawing No.	310203848-01-300-C1008
Rev.	<b>E</b>

pw:\stantec-ap-pw-bentley.com.stantec-ap-pw-01\Documents\New Zealand Clients\NZTA (New Zealand Transport Agency)\310203848 - Otaki to North of Levin DBC\01 - O2NL\300 - Stormwater\310203848-01-300-C1008

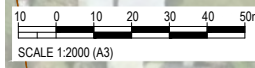






**LEGEND**

—	EXISTING PROPERTY BOUNDARY	—	EXISTING STREAM	⊕	HEADWALL WITH RIP RAP
- - -	PROPOSED DESIGNATION BOUNDARY	⊕	IMPACTED STREAM	⊕	SCRUFFY DOME
⊕	REALIGNED STREAM (INDICATIVE DESIGN)	⊕	CLEAN OPEN CHANNEL	⊕	MANHOLE
⊕	CLEAN LINED CHANNEL	⊕	ROAD RUNOFF CHANNEL	⊕	CATCH PIT
⊕	VEGETATED SWALE	⊕	CULVERT WITH ID IF SHOWN	⊕	MANHOLE CATCH PIT
⊕	STORMWATER PIPE	⊕	POND INLET/OUTLET	⊕	SCOUR PROTECTION
⊕	SWALE TO SWALE	⊕	CULVERT WITH ID	⊕	SPOIL SITE OPTION (INDICATIVE EXTENT)
⊕		⊕		⊕	MATERIAL SUPPLY SITE (INDICATIVE EXTENT)
		⊕		⊕	CUT AREA
		⊕		⊕	FILL AREA
		⊕		⊕	POSSIBLE PROPERTY ACCESS ROUTE



**NOT FOR CONSTRUCTION**

REV	REVISIONS	DRN	CHK	APP	DATE
F	EAST-WEST ARTERIAL DESIGN REMOVED	MH	JP	JP	19/10/22
E	VARIOUS UPDATES - ISSUED FOR RMA CONSENT	MH	JP	JP	10/10/22
D	ISSUED FOR RMA CONSENT	SS	AC	JP	19/08/22
C	ISSUED FOR CONSENT - DRAFT	SS	AC	JP	20/04/22
B	ISSUED FOR CONSENT - DRAFT	SS	AC	JP	09/12/21
A	ISSUED FOR DBC	SS	AC	JP	18/06/21

SURVEYED	DESIGNED	DRAWN	CAD REVIEW	DESIGN CHECK	DESIGN REVIEW	APPROVED
	Nolan Naidoo	Gavin Smit	Steve Sutton	Nick Keenan	Andrew Craig	Jamie Povall
	18.06.21	18.06.21	18.06.21	14.04.22	15.04.22	19.10.22

Client:

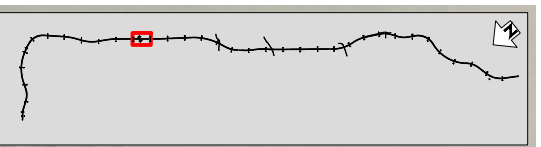
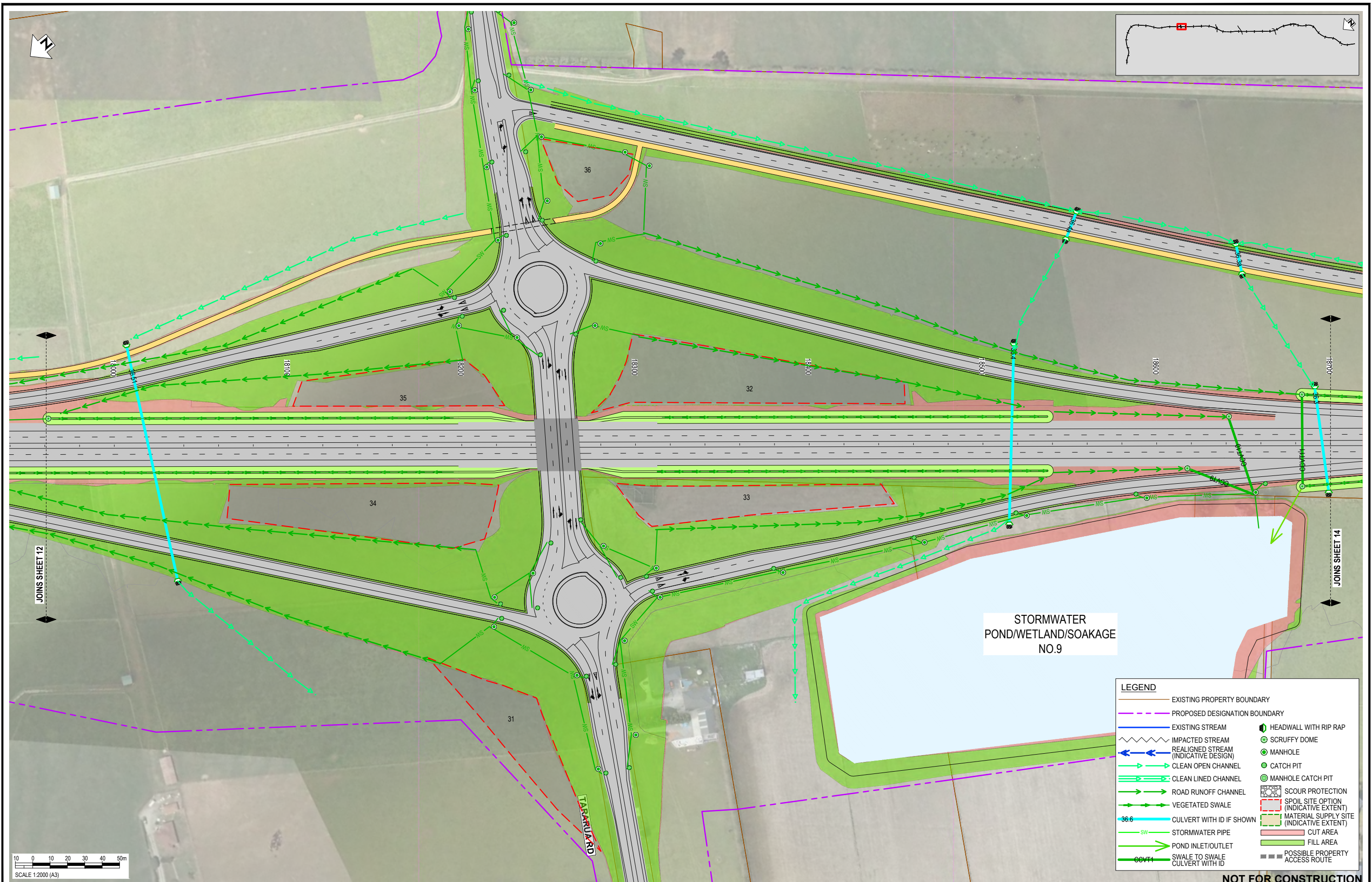



WAKA KOTAHI  
OTAKI TO NORTH OF LEVIN PROJECT

DRAINAGE LAYOUT PLAN - INDICATIVE  
SHEET 12

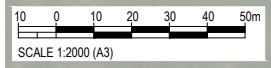
Status Stamp	<b>FOR CONSENT</b>
Date Stamp	<b>19.10.22</b>
Scale	1 : 2000 (A3)
Drawing No.	310203848-01-300-C1011
Rev.	<b>F</b>

pw:\stamtec-ap-pw-bentley.com\stamtec-ap-pw-01\Documents\New Zealand Clients\NZTA (New Zealand Transport Agency)\310203848 - Otaki to North of Levin DBC\01 - O2NL300 - Stormwater\310203848-01-300-C1011



STORMWATER  
POND/WETLAND/SOAKAGE  
NO.9

LEGEND	
	EXISTING PROPERTY BOUNDARY
	PROPOSED DESIGNATION BOUNDARY
	EXISTING STREAM
	IMPACTED STREAM
	REALIGNED STREAM (INDICATIVE DESIGN)
	CLEAN OPEN CHANNEL
	CLEAN LINED CHANNEL
	ROAD RUNOFF CHANNEL
	VEGETATED SWALE
	CULVERT WITH ID IF SHOWN
	STORMWATER PIPE
	POND INLET/OUTLET
	SWALE TO SWALE CULVERT WITH ID
	HEADWALL WITH RIP RAP
	SCRUFFY DOME
	MANHOLE
	CATCH PIT
	MANHOLE CATCH PIT
	SCOUR PROTECTION
	SPOIL SITE OPTION (INDICATIVE EXTENT)
	MATERIAL SUPPLY SITE (INDICATIVE EXTENT)
	CUT AREA
	FILL AREA
	POSSIBLE PROPERTY ACCESS ROUTE



REV	REVISIONS	DRN	CHK	APP	DATE
E	VARIOUS UPDATES - ISSUED FOR RMA CONSENT	MH	JP	JP	10.10.22
D	ISSUED FOR RMA CONSENT	SS	AC	JP	19.08.22
C	ISSUED FOR CONSENT - DRAFT	SS	AC	JP	20.04.22
B	ISSUED FOR CONSENT - DRAFT	SS	AC	JP	09.12.21
A	ISSUED FOR DBC	SS	AC	JP	18.06.21

DESIGNED	DATE
Nolan Naidoo	18.06.21
Gavin Smit	18.06.21
Steve Sutton	18.06.21
Nick Keenan	14.04.22
Andrew Craig	15.04.22
Jamie Povall	10.10.22



WAKA KOTAHI  
OTAKI TO NORTH OF LEVIN PROJECT  
DRAINAGE LAYOUT PLAN - INDICATIVE  
SHEET 13

FOR CONSENT	
Date Stamp	10.10.22
Scale	1 : 2000 (A3)
Drawing No.	310203848-01-300-C1012
Rev.	E



**LEGEND**

—	EXISTING PROPERTY BOUNDARY	—	PROPOSED DESIGNATION BOUNDARY
—	EXISTING STREAM	—	IMPACTED STREAM
—	REALIGNED STREAM (INDICATIVE DESIGN)	—	CLEAN OPEN CHANNEL
—	CLEAN LINED CHANNEL	—	ROAD RUNOFF CHANNEL
—	VEGETATED SWALE	—	CULVERT WITH ID IF SHOWN
—	STORMWATER PIPE	—	POND INLET/OUTLET
—	SWALE TO SWALE	—	CULVERT WITH ID
—	HEADWALL WITH RIP RAP	—	SCRUFFY DOME
—	MANHOLE	—	CATCH PIT
—	MANHOLE CATCH PIT	—	SCOUR PROTECTION
—	SPOIL SITE OPTION (INDICATIVE EXTENT)	—	MATERIAL SUPPLY SITE (INDICATIVE EXTENT)
—	CUT AREA	—	FILL AREA
—	POSSIBLE PROPERTY ACCESS ROUTE		

REV	DESCRIPTION	DRN	CHK	APP	DATE
E	VARIOUS UPDATES - ISSUED FOR RMA CONSENT	MH	JP	JP	10.10.22
D	ISSUED FOR RMA CONSENT	SS	AC	JP	19.08.22
C	ISSUED FOR CONSENT - DRAFT	SS	AC	JP	20.04.22
B	ISSUED FOR CONSENT - DRAFT	SS	AC	JP	09.12.21
A	ISSUED FOR DBC	SS	AC	JP	18.06.21

SURVEYED	DESIGNED	DRAWN	CAD REVIEW	DESIGN CHECK	DESIGN REVIEW	APPROVED
	Nolan Naidoo	Gavin Smit	Steve Sutton	Nick Keenan	Andrew Craig	Jamie Povall
	18.06.21	18.06.21	18.06.21	14.04.22	15.04.22	10.10.22

Client:

WAKA KOTAHI  
 OTAKI TO NORTH OF LEVIN PROJECT  
 DRAINAGE LAYOUT PLAN - INDICATIVE  
 SHEET 14

Status Stamp	<b>FOR CONSENT</b>
Date Stamp	<b>10.10.22</b>
Scale	1 : 2000 (A3)
Drawing No.	310203848-01-300-C1013
Rev.	<b>E</b>

pw:\stantec-ap-pw-bentley.com\stantec-ap-pw-01\Documents\New Zealand Clients\NZTA (New Zealand Transport Agency)\310203848 - Otaki to North of Levin DBC\01 - O2NL\300 - Stormwater\310203848-01-300-C1013





**LEGEND**

—	EXISTING PROPERTY BOUNDARY	—	EXISTING STREAM	●	HEADWALL WITH RIP RAP
- - -	PROPOSED DESIGNATION BOUNDARY	~	IMPACTED STREAM	⊗	SCRUFFY DOME
—	REALIGNED STREAM (INDICATIVE DESIGN)	—	CLEAN OPEN CHANNEL	○	MANHOLE
—	CLEAN LINED CHANNEL	—	ROAD RUNOFF CHANNEL	○	CATCH PIT
—	VEGETATED SWALE	—	CULVERT WITH ID IF SHOWN	⊗	MANHOLE CATCH PIT
—	STORMWATER PIPE	—	SCOUR PROTECTION	⊗	SPOIL SITE OPTION (INDICATIVE EXTENT)
—	POND INLET/OUTLET	—	SPOIL SITE OPTION (INDICATIVE EXTENT)	⊗	MATERIAL SUPPLY SITE (INDICATIVE EXTENT)
—	SWALE TO SWALE	—	CUT AREA	—	FILL AREA
—	CULVERT WITH ID	—	FILL AREA	—	POSSIBLE PROPERTY ACCESS ROUTE

SCALE 1:2000 (A3)

REV	REVISIONS	DRN	CHK	APP	DATE
E	VARIOUS UPDATES - ISSUED FOR RMA CONSENT	MH	JP	JP	10.10.22
D	ISSUED FOR RMA CONSENT	SS	AC	JP	19.08.22
C	ISSUED FOR CONSENT - DRAFT	SS	AC	JP	20.04.22
B	ISSUED FOR CONSENT - DRAFT	SS	AC	JP	09.12.21
A	ISSUED FOR DBC	SS	AC	JP	18.06.21

SURVEYED		
DESIGNED	Nolan Naidoo	18.06.21
DRAWN	Gavin Smit	18.06.21
CAD REVIEW	Steve Sutton	18.06.21
DESIGN CHECK	Nick Keenan	14.04.22
DESIGN REVIEW	Andrew Craig	15.04.22
APPROVED	Jamie Povall	10.10.22
PROF REGISTRATION:		

Client:



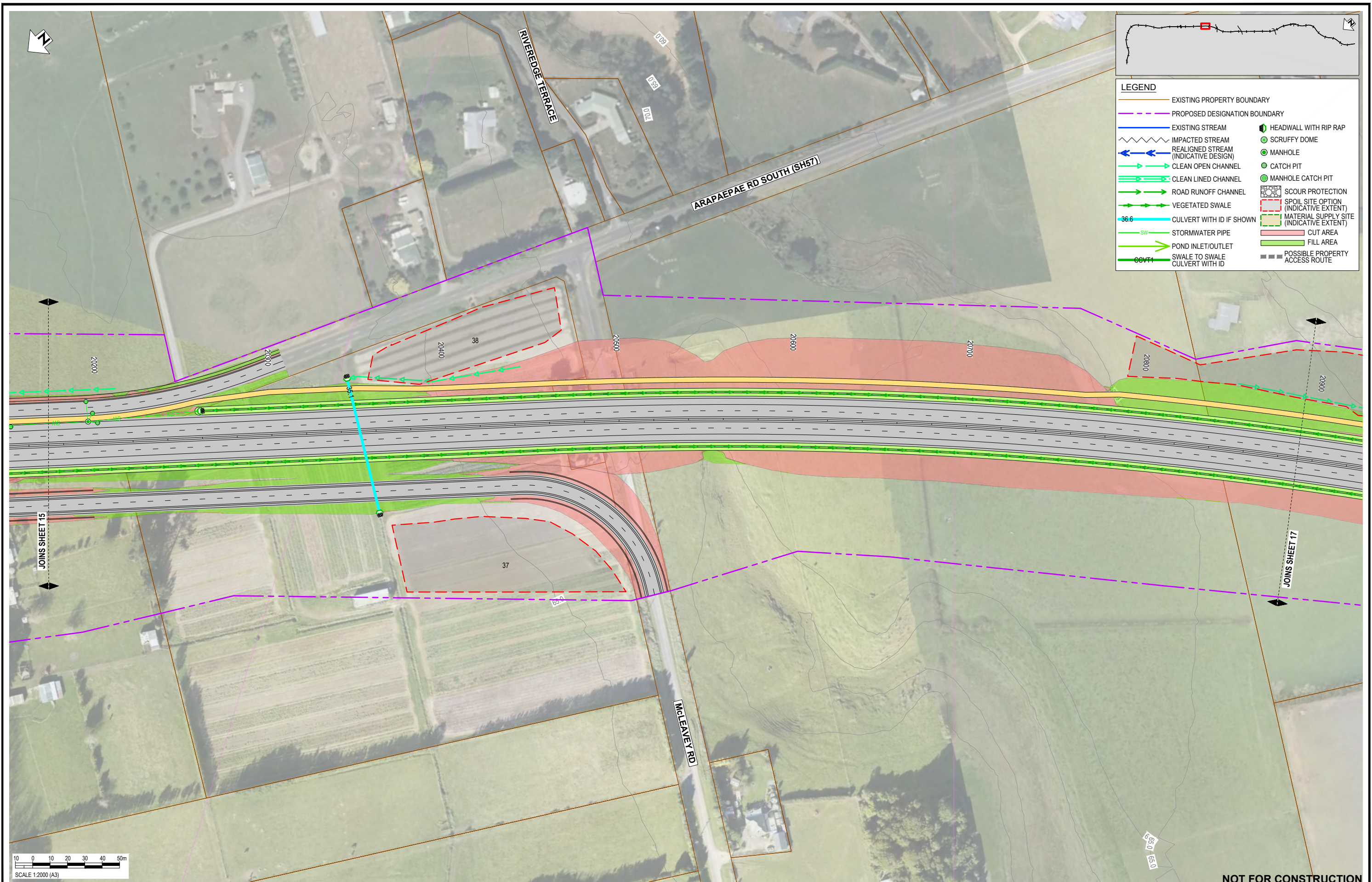

WAKA KOTAHI  
OTAKI TO NORTH OF LEVIN PROJECT

DRAINAGE LAYOUT PLAN - INDICATIVE  
SHEET 15

NOT FOR CONSTRUCTION

Status Stamp	<b>FOR CONSENT</b>
Date Stamp	<b>10.10.22</b>
Scale	1 : 2000 (A3)
Drawing No.	310203848-01-300-C1014
Rev.	<b>E</b>

pw:\stantec-ap-pw-bentley.com\stantec-ap-pw-01\Documents\New Zealand Clients\NZTA (New Zealand Transport Agency)\310203848 - Otaki to North of Levin DBC\01 - O2NL\300 - Stormwater\310203848-01-300-C1014



REV	REVISIONS	DRN	CHK	APP	DATE
E	VARIOUS UPDATES - ISSUED FOR RMA CONSENT	MH	JP	JP	10.10.22
D	ISSUED FOR RMA CONSENT	SS	AC	JP	19.08.22
C	ISSUED FOR CONSENT - DRAFT	SS	AC	JP	20.04.22
B	ISSUED FOR CONSENT - DRAFT	SS	AC	JP	09.12.21
A	ISSUED FOR DBC	SS	AC	JP	18.06.21

SURVEYED	DESIGNED	DRAWN	CAD REVIEW	DESIGN CHECK	DESIGN REVIEW	APPROVED
	Nolan Naidoo	Gavin Smit	Steve Sutton	Nick Keenan	Andrew Craig	Jamie Povall
	18.06.21	18.06.21	18.06.21	14.04.22	15.04.22	10.10.222

Client:




WAKA KOTAHI  
 OTAKI TO NORTH OF LEVIN PROJECT  
 DRAINAGE LAYOUT PLAN - INDICATIVE  
 SHEET 16

Status Stamp	<b>FOR CONSENT</b>
Date Stamp	<b>10.10.22</b>
Scale	1 : 2000 (A3)
Drawing No.	310203848-01-300-C1015
Rev.	<b>E</b>

pw:\stntec-ap-pw-bentley.com\stntec-ap-pw-01\Documents\New Zealand Clients\NZTA (New Zealand Transport Agency)\310203848 - Otaki to North of Levin DBC\01 - O2NL\300 - Stormwater\310203848-01-300-C1015



**LEGEND**

—	EXISTING PROPERTY BOUNDARY	—	EXISTING STREAM	⊕	HEADWALL WITH RIP RAP
- - -	PROPOSED DESIGNATION BOUNDARY	⊕	IMPACTED STREAM	⊕	SCRUFFY DOME
—	REALIGNED STREAM (INDICATIVE DESIGN)	⊕	CLEAN OPEN CHANNEL	⊕	MANHOLE
—	CLEAN LINED CHANNEL	⊕	ROAD RUNOFF CHANNEL	⊕	CATCH PIT
—	VEGETATED SWALE	⊕	CULVERT WITH ID IF SHOWN	⊕	MANHOLE CATCH PIT
—	STORMWATER PIPE	⊕	SCOUR PROTECTION	⊕	SPOIL SITE OPTION (INDICATIVE EXTENT)
—	POND INLET/OUTLET	⊕	MATERIAL SUPPLY SITE (INDICATIVE EXTENT)	⊕	CUT AREA
—	SWALE TO SWALE CULVERT WITH ID	⊕	FILL AREA	⊕	POSSIBLE PROPERTY ACCESS ROUTE

SCALE 1:2000 (A3)

REV	REVISIONS	DRN	CHK	APP	DATE
E	VARIOUS UPDATES - ISSUED FOR RMA CONSENT	MH	JP	JP	10.10.22
D	ISSUED FOR RMA CONSENT	SS	AC	JP	19.08.22
C	ISSUED FOR CONSENT - DRAFT	SS	AC	JP	20.04.22
B	ISSUED FOR CONSENT - DRAFT	SS	AC	JP	09.12.21
A	ISSUED FOR DBC	SS	AC	JP	18.06.21

SURVEYED	DESIGNED	DRAWN	CAD REVIEW	DESIGN CHECK	DESIGN REVIEW	APPROVED
	Nolan Naidoo	Gavin Smit	Steve Sutton	Nick Keenan	Andrew Craig	Jamie Povall
	18.06.21	18.06.21	14.04.22	14.04.22	15.04.22	10.10.22

Client:

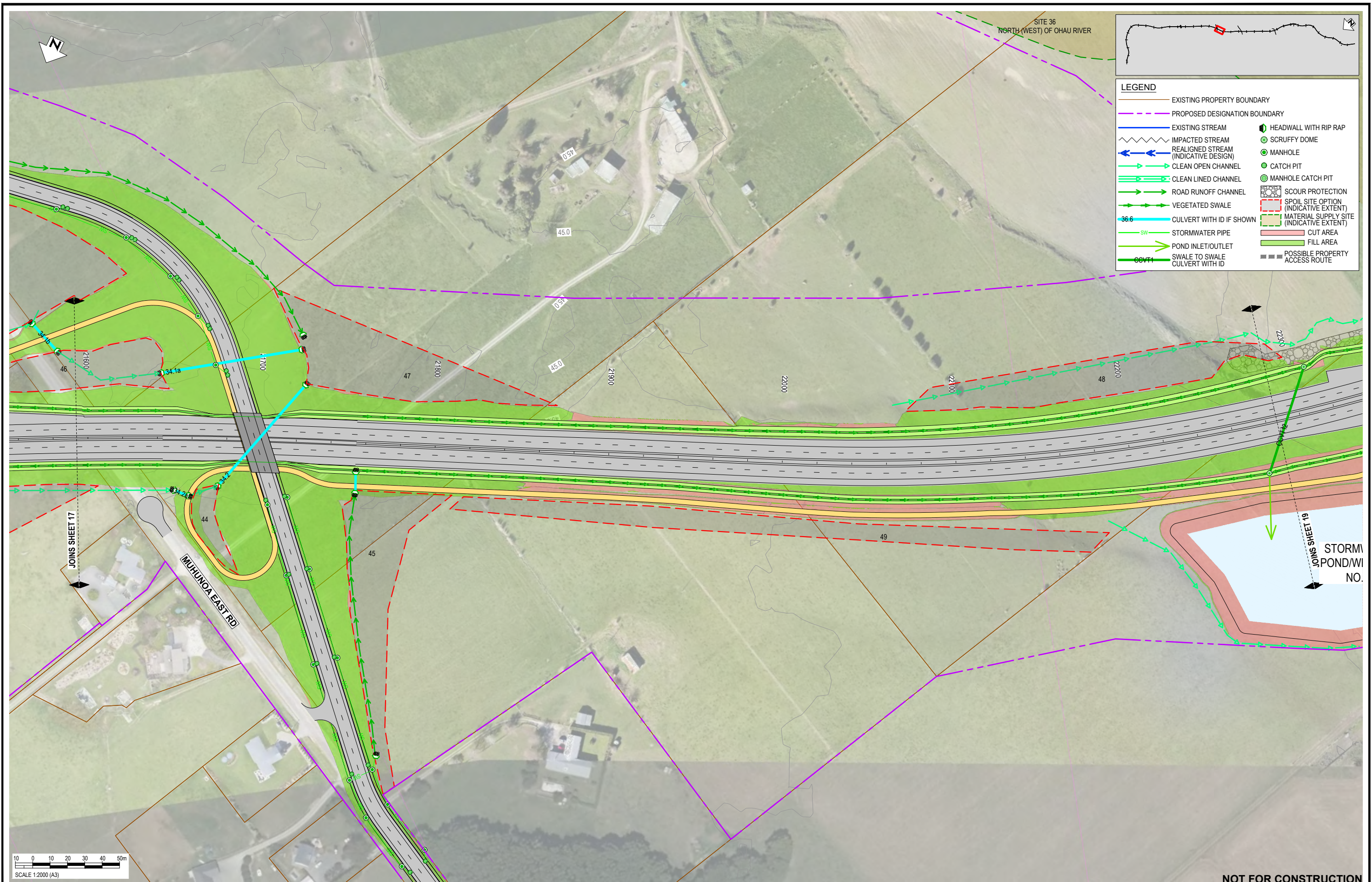



WAKA KOTAHI  
OTAKI TO NORTH OF LEVIN PROJECT

DRAINAGE LAYOUT PLAN - INDICATIVE  
SHEET 17

NOT FOR CONSTRUCTION

Status Stamp	<b>FOR CONSENT</b>
Date Stamp	<b>10.10.22</b>
Scale	1 : 2000 (A3)
Drawing No.	310203848-01-300-C1016
Rev.	<b>E</b>



**LEGEND**

—	EXISTING PROPERTY BOUNDARY	—	PROPOSED DESIGNATION BOUNDARY
—	EXISTING STREAM	—	IMPACTED STREAM
—	REALIGNED STREAM (INDICATIVE DESIGN)	—	CLEAN OPEN CHANNEL
—	CLEAN LINED CHANNEL	—	ROAD RUNOFF CHANNEL
—	VEGETATED SWALE	—	CULVERT WITH ID IF SHOWN
—	STORMWATER PIPE	—	POND INLET/OUTLET
—	SWALE TO SWALE CULVERT WITH ID	—	HEADWALL WITH RIP RAP
—	SCRUFFY DOME	—	MANHOLE
—	CATCH PIT	—	MANHOLE CATCH PIT
—	SCOUR PROTECTION	—	SPOIL SITE OPTION (INDICATIVE EXTENT)
—	MATERIAL SUPPLY SITE (INDICATIVE EXTENT)	—	CUT AREA
—	FILL AREA	—	POSSIBLE PROPERTY ACCESS ROUTE

SCALE 1:2000 (A3)

NOT FOR CONSTRUCTION

REV	DESCRIPTION	DRN	CHK	APP	DATE
E	VARIOUS UPDATES - ISSUED FOR RMA CONSENT	MH	JP	JP	10.10.22
D	ISSUED FOR RMA CONSENT	SS	AC	JP	19.08.22
C	ISSUED FOR CONSENT - DRAFT	SS	AC	JP	20.04.22
B	ISSUED FOR CONSENT - DRAFT	SS	AC	JP	09.12.21
A	ISSUED FOR DBC	SS	AC	JP	18.06.21

STATUS	NAME	DATE
SURVEYED		
DESIGNED	Nolan Naidoo	18.06.21
DRAWN	Gavin Smit	18.06.21
CAD REVIEW	Steve Sutton	18.06.21
DESIGN CHECK	Nick Keenan	14.04.22
DESIGN REVIEW	Andrew Craig	15.04.22
APPROVED	Jamie Povall	10.10.22
PROF REGISTRATION:		

Client:

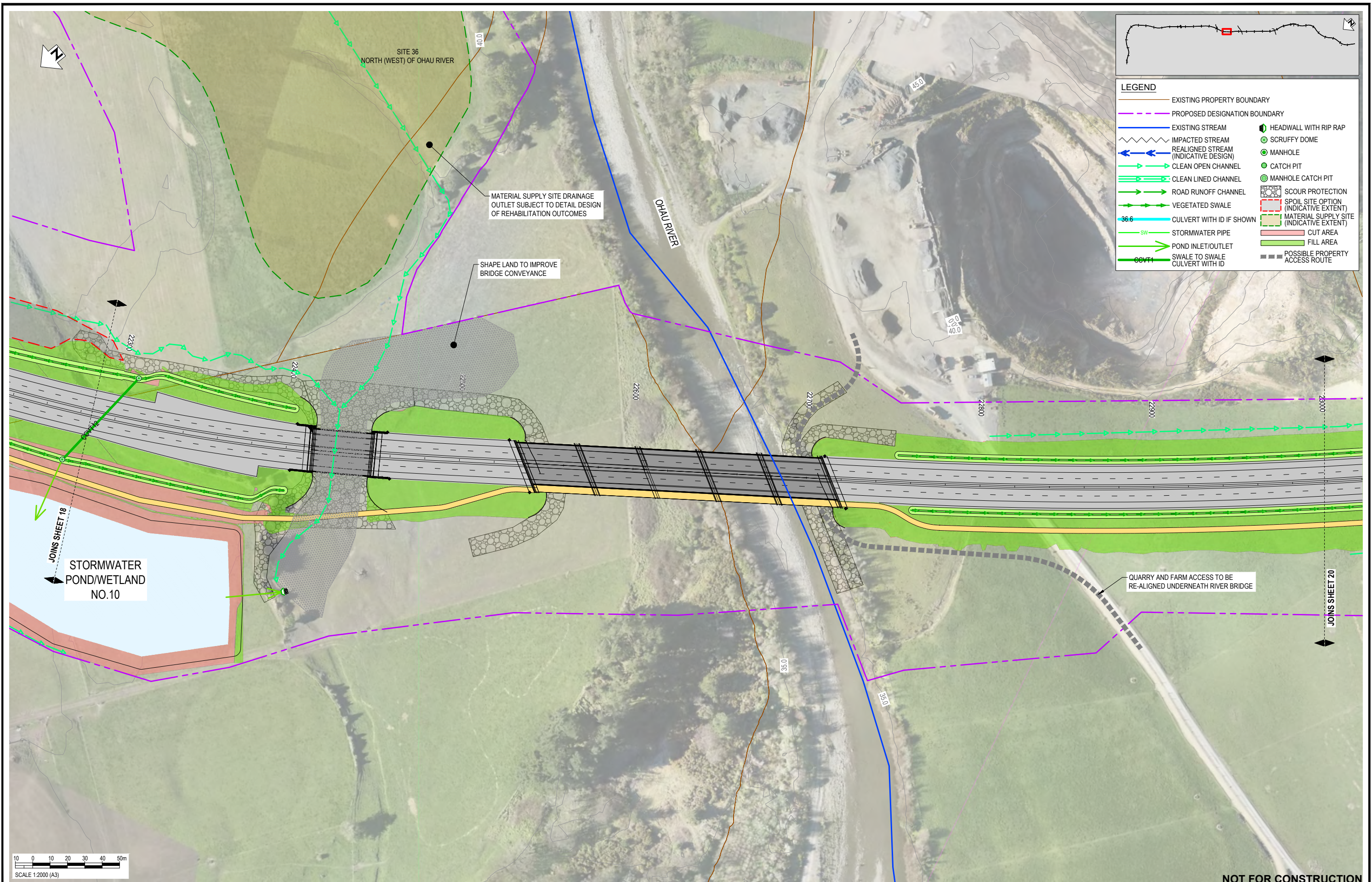



WAKA KOTAHI  
OTAKI TO NORTH OF LEVIN PROJECT

DRAINAGE LAYOUT PLAN - INDICATIVE  
SHEET 18

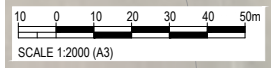
Status Stamp	<b>FOR CONSENT</b>
Date Stamp	<b>10.10.22</b>
Scale	1 : 2000 (A3)
Drawing No.	310203848-01-300-C1017
Rev.	<b>E</b>

pw:\stntec-ap-pw-bentley.com\stntec-ap-pw-01\Documents\New Zealand Clients\NZTA (New Zealand Transport Agency)\310203848 - Otaki to North of Levin DBC\01 - O2NL\300 - Stormwater\310203848-01-300-C1017



**LEGEND**

—	EXISTING PROPERTY BOUNDARY	—	EXISTING STREAM	⬇	REALIGNED STREAM (INDICATIVE DESIGN)	→	CLEAN OPEN CHANNEL	→	CLEAN LINED CHANNEL	→	ROAD RUNOFF CHANNEL	→	VEGETATED SWALE	→	36.6	CULVERT WITH ID IF SHOWN	— SW	STORMWATER PIPE	→	POND INLET/OUTLET	→	GOVT1	SWALE TO SWALE CULVERT WITH ID		
- - -	PROPOSED DESIGNATION BOUNDARY	⬇	IMPACTED STREAM	⊙	HEADWALL WITH RIP RAP	⊙	SCRUFFY DOME	⊙	MANHOLE	⊙	CATCH PIT	⊙	MANHOLE CATCH PIT	⊙	SCOUR PROTECTION	⊙	SPOIL SITE OPTION (INDICATIVE EXTENT)	⊙	MATERIAL SUPPLY SITE (INDICATIVE EXTENT)	⊙	CUT AREA	⊙	FILL AREA	⊙	POSSIBLE PROPERTY ACCESS ROUTE



**NOT FOR CONSTRUCTION**

REV	REVISIONS	DRN	CHK	APP	DATE
E	VARIOUS UPDATES - ISSUED FOR RMA CONSENT	MH	JP	JP	10.10.22
D	ISSUED FOR RMA CONSENT	SS	AC	JP	19.08.22
C	ISSUED FOR CONSENT - DRAFT	SS	AC	JP	20.04.22
B	ISSUED FOR CONSENT - DRAFT	SS	AC	JP	09.12.21
A	ISSUED FOR DBC	SS	AC	JP	18.06.21

SURVEYED	DESIGNED	DRAWN	CAD REVIEW	DESIGN CHECK	DESIGN REVIEW	APPROVED
	Nolan Naidoo	Gavin Smit	Steve Sutton	Nick Keenan	Andrew Craig	Jamie Povall
	18.06.21	18.06.21	18.06.21	14.04.22	15.04.22	10.10.222

Client:

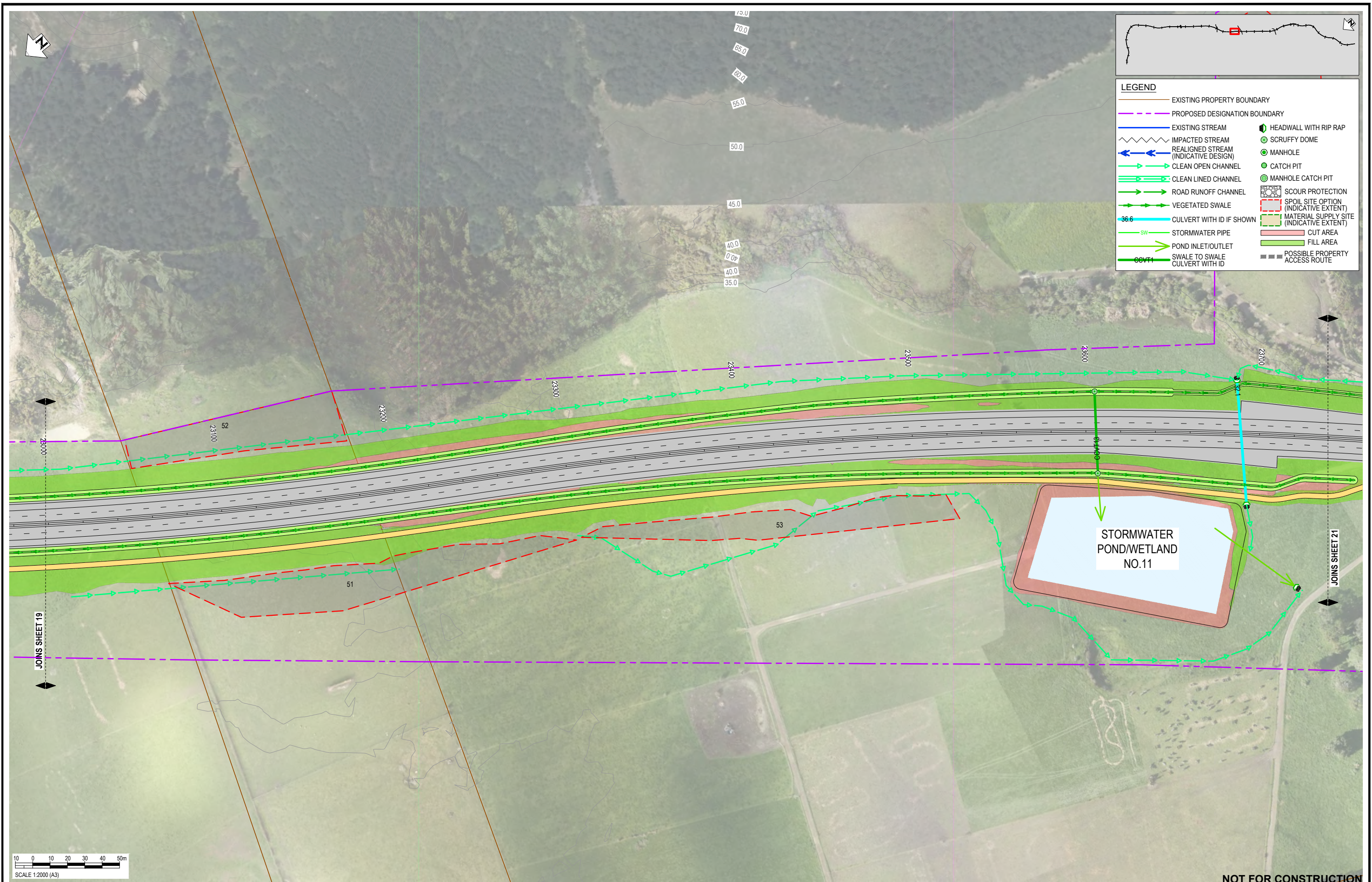



WAKA KOTAHI  
OTAKI TO NORTH OF LEVIN PROJECT

DRAINAGE LAYOUT PLAN - INDICATIVE  
SHEET 19

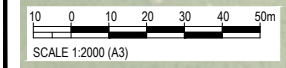
Status Stamp	<b>FOR CONSENT</b>
Date Stamp	<b>10.10.22</b>
Scale	1 : 2000 (A3)
Drawing No.	310203848-01-300-C1018
Rev.	<b>E</b>

pw:\stntec-ap-pw-bentley.com\stntec-ap-pw-01\Documents\New Zealand Clients\NZTA (New Zealand Transport Agency)\310203848 - Otaki to North of Levin DBC\01 - O2NL\300 - Stormwater\310203848-01-300-C1018



**LEGEND**

—	EXISTING PROPERTY BOUNDARY	—	PROPOSED DESIGNATION BOUNDARY
—	EXISTING STREAM	—	IMPACTED STREAM (INDICATIVE DESIGN)
—	REALIGNED STREAM (INDICATIVE DESIGN)	—	CLEAN OPEN CHANNEL
—	CLEAN LINED CHANNEL	—	ROAD RUNOFF CHANNEL
—	VEGETATED SWALE	—	CULVERT WITH ID IF SHOWN
—	STORMWATER PIPE	—	POND INLET/OUTLET
—	SWALE TO SWALE	—	CULVERT WITH ID
—	HEADWALL WITH RIP RAP	—	SCRUFFY DOME
—	MANHOLE	—	CATCH PIT
—	CATCH PIT	—	MANHOLE CATCH PIT
—	SCOUR PROTECTION	—	SPOIL SITE OPTION (INDICATIVE EXTENT)
—	MATERIAL SUPPLY SITE (INDICATIVE EXTENT)	—	CUT AREA
—	FILL AREA	—	POSSIBLE PROPERTY ACCESS ROUTE



**NOT FOR CONSTRUCTION**

REV	REVISIONS	DRN	CHK	APP	DATE
E	VARIOUS UPDATES - ISSUED FOR RMA CONSENT	MH	JP	JP	10.10.22
D	ISSUED FOR RMA CONSENT	SS	AC	JP	19.08.22
C	ISSUED FOR CONSENT - DRAFT	SS	AC	JP	20.04.22
B	ISSUED FOR CONSENT - DRAFT	SS	AC	JP	09.12.21
A	ISSUED FOR DBC	SS	AC	JP	18.06.21

SURVEYED	DESIGNED	DRAWN	CAD REVIEW	DESIGN CHECK	DESIGN REVIEW	APPROVED
	Nolan Naidoo	Gavin Smit	Steve Sutton	Nick Keenan	Andrew Craig	Jamie Povall
	18.06.21	18.06.21	18.06.21	14.04.22	15.04.22	10.10.22

Client: **WAKA KOTAHI**  
**OTAKI TO NORTH OF LEVIN PROJECT**

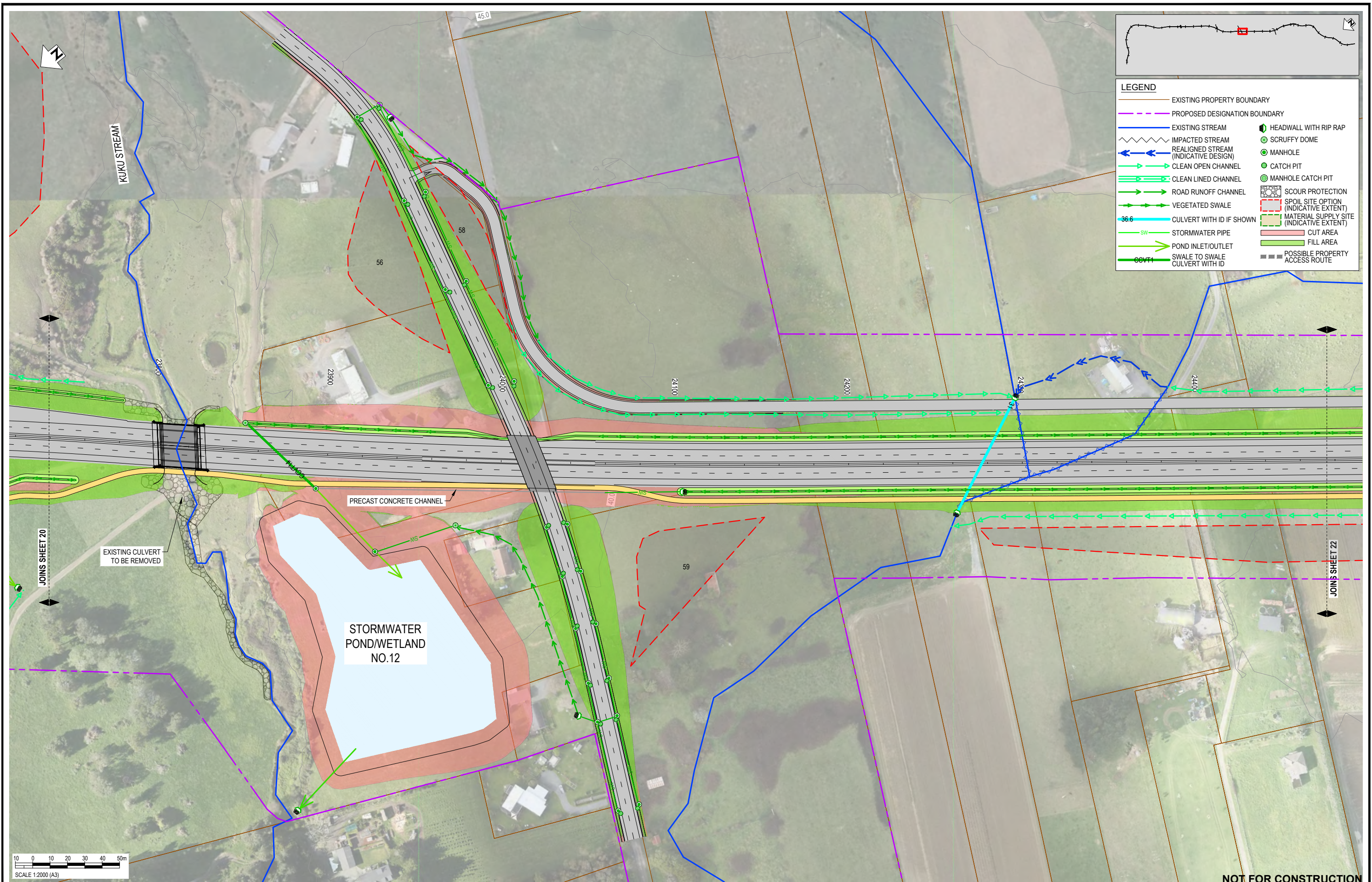
**Stantec** **WAKA KOTAHI**  
**NZ TRANSPORT AGENCY**

**WAKA KOTAHI**  
**OTAKI TO NORTH OF LEVIN PROJECT**

**DRAINAGE LAYOUT PLAN - INDICATIVE**  
**SHEET 20**

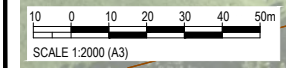
Status Stamp	<b>FOR CONSENT</b>
Date Stamp	<b>10.10.22</b>
Scale	1 : 2000 (A3)
Drawing No.	310203848-01-300-C1019
Rev.	<b>E</b>

pw:\stantec-ap-pw-bentley.com\stantec-ap-pw-01\Documents\New Zealand Clients\NZTA (New Zealand Transport Agency)\310203848 - Otaki to North of Levin DBC\01 - O2NL\300 - Stormwater\310203848-01-300-C1019



**LEGEND**

—	EXISTING PROPERTY BOUNDARY	—	EXISTING STREAM	●	HEADWALL WITH RIP RAP
- - -	PROPOSED DESIGNATION BOUNDARY	~	IMPACTED STREAM	⊗	SCRUFFY DOME
—	REALIGNED STREAM (INDICATIVE DESIGN)	—	CLEAN OPEN CHANNEL	○	MANHOLE
—	CLEAN LINED CHANNEL	—	ROAD RUNOFF CHANNEL	○	CATCH PIT
—	VEGETATED SWALE	—	SCOUR PROTECTION	○	MANHOLE CATCH PIT
—	CULVERT WITH ID IF SHOWN	—	SPOIL SITE OPTION (INDICATIVE EXTENT)	○	—
—	STORMWATER PIPE	—	MATERIAL SUPPLY SITE (INDICATIVE EXTENT)	—	—
—	POND INLET/OUTLET	—	CUT AREA	—	—
—	SWALE TO SWALE CULVERT WITH ID	—	FILL AREA	—	—
—	—	—	POSSIBLE PROPERTY ACCESS ROUTE	—	—



**NOT FOR CONSTRUCTION**

REV	DESCRIPTION	DRN	CHK	APP	DATE
E	VARIOUS UPDATES - ISSUED FOR RMA CONSENT	MH	JP	JP	10.10.22
D	ISSUED FOR RMA CONSENT	SS	AC	JP	19.08.22
C	ISSUED FOR CONSENT - DRAFT	SS	AC	JP	20.04.22
B	ISSUED FOR CONSENT - DRAFT	SS	AC	JP	09.12.21
A	ISSUED FOR DBC	SS	AC	JP	18.06.21

SURVEYED	DESIGNED	DRAWN	CAD REVIEW	DESIGN CHECK	DESIGN REVIEW	APPROVED	DATE
	Nolan Naidoo	Gavin Smit	Steve Sutton	Nick Keenan	Andrew Craig	Jamie Povall	18.06.21
							18.06.21
							18.06.21
							14.04.22
							15.04.22
							10.10.22

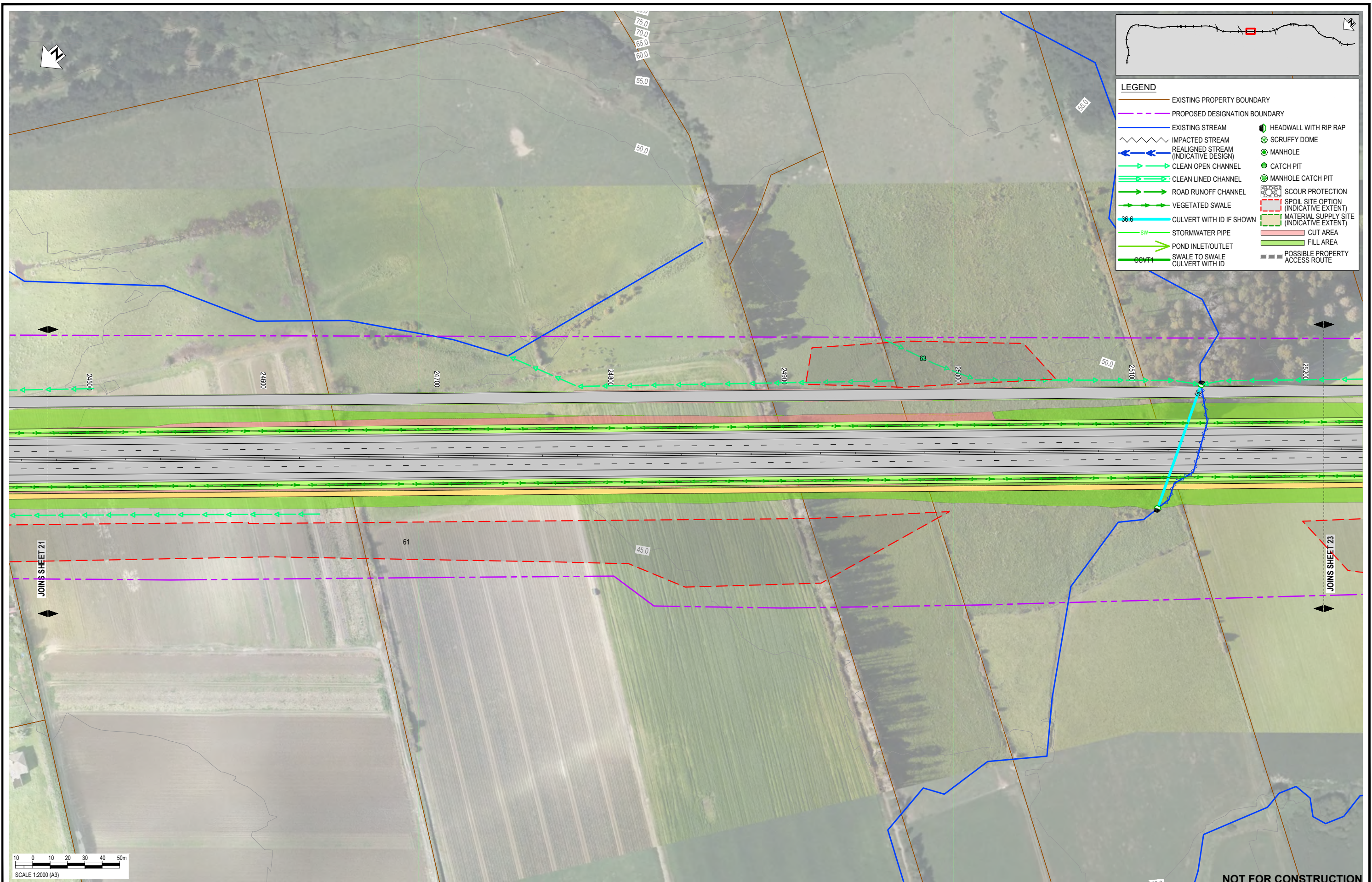
Client:

WAKA KOTAHI  
OTAKI TO NORTH OF LEVIN PROJECT

DRAINAGE LAYOUT PLAN - INDICATIVE  
SHEET 21

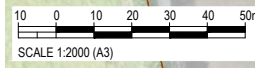
Status Stamp	<b>FOR CONSENT</b>
Date Stamp	<b>10.10.22</b>
Scale	1 : 2000 (A3)
Drawing No.	310203848-01-300-C1020
Rev.	<b>E</b>

pw:\stantec-ap-pw.bentley.com\stantec-ap-pw-01\Documents\New Zealand Clients\NZTA (New Zealand Transport Agency)\310203848 - Otaki to North of Levin DBC01 - O2NL300 - Stormwater\310203848-01-300-C1020



**LEGEND**

—	EXISTING PROPERTY BOUNDARY	—	PROPOSED DESIGNATION BOUNDARY
—	EXISTING STREAM	—	HEADWALL WITH RIP RAP
~	IMPACTED STREAM	—	SCRUFFY DOME
—	REALIGNED STREAM (INDICATIVE DESIGN)	—	MANHOLE
—	CLEAN OPEN CHANNEL	—	CATCH PIT
—	CLEAN LINED CHANNEL	—	MANHOLE CATCH PIT
—	ROAD RUNOFF CHANNEL	—	SCOUR PROTECTION
—	VEGETATED SWALE	—	SPOIL SITE OPTION (INDICATIVE EXTENT)
—	CULVERT WITH ID IF SHOWN	—	MATERIAL SUPPLY SITE (INDICATIVE EXTENT)
—	STORMWATER PIPE	—	CUT AREA
—	POND INLET/OUTLET	—	FILL AREA
—	SWALE TO SWALE	—	POSSIBLE PROPERTY ACCESS ROUTE
—	CULVERT WITH ID		



**NOT FOR CONSTRUCTION**

REV	REVISIONS	DRN	CHK	APP	DATE
E	VARIOUS UPDATES - ISSUED FOR RMA CONSENT	MH	JP	JP	10.10.22
D	ISSUED FOR RMA CONSENT	SS	AC	JP	19.08.22
C	ISSUED FOR CONSENT - DRAFT	SS	AC	JP	20.04.22
B	ISSUED FOR CONSENT - DRAFT	SS	AC	JP	09.12.21
A	ISSUED FOR DBC	SS	AC	JP	18.06.21

STATUS	NAME	DATE
SURVEYED		
DESIGNED	Nolan Naidoo	18.06.21
DRAWN	Gavin Smit	18.06.21
CAD REVIEW	Steve Sutton	18.06.21
DESIGN CHECK	Nick Keenan	14.04.22
DESIGN REVIEW	Andrew Craig	15.04.22
APPROVED	Jamie Povall	10.10.22
PROF REGISTRATION:		

Client:

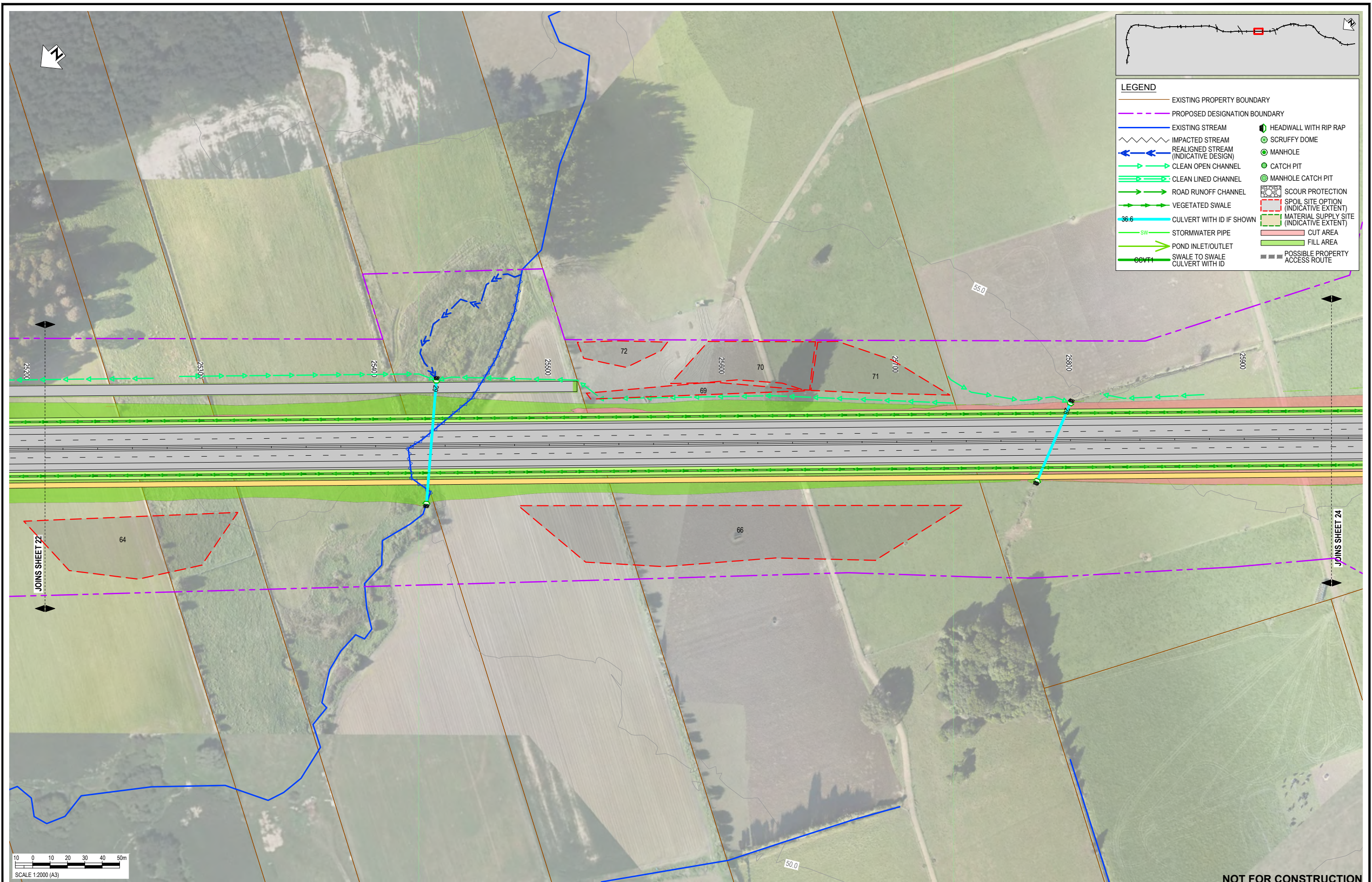
WAKA KOTAHI  
OTAKI TO NORTH OF LEVIN PROJECT

DRAINAGE LAYOUT PLAN - INDICATIVE  
SHEET 22

Status Stamp	<b>FOR CONSENT</b>
Date Stamp	<b>10.10.22</b>
Scale	1 : 2000 (A3)
Drawing No.	310203848-01-300-C1021
Rev.	<b>E</b>

pw:\stntec-ap-pw-bentley.com\stntec-ap-pw-01\Documents\New Zealand Clients\NZTA (New Zealand Transport Agency)\310203848 - Otaki to North of Levin DBC\01 - O2NL300 - Stormwater\310203848-01-300-C1021





**LEGEND**

—	EXISTING PROPERTY BOUNDARY	—	EXISTING STREAM	⬇	HEADWALL WITH RIP RAP
- - -	PROPOSED DESIGNATION BOUNDARY	⬇	IMPACTED STREAM	⊕	SCRUFFY DOME
⬇	REALIGNED STREAM (INDICATIVE DESIGN)	⊕	MANHOLE	⊕	CATCH PIT
⬇	CLEAN OPEN CHANNEL	⊕	MANHOLE CATCH PIT	⊕	SCOUR PROTECTION
⬇	CLEAN LINED CHANNEL	⊕	SPOIL SITE OPTION (INDICATIVE EXTENT)	⊕	MATERIAL SUPPLY SITE (INDICATIVE EXTENT)
⬇	ROAD RUNOFF CHANNEL	⊕	CUT AREA	⊕	FILL AREA
⬇	VEGETATED SWALE	⊕	POSSIBLE PROPERTY ACCESS ROUTE		
⬇	CULVERT WITH ID IF SHOWN				
⬇	STORMWATER PIPE				
⬇	POND INLET/OUTLET				
⬇	SWALE TO SWALE				
⬇	CULVERT WITH ID				



**NOT FOR CONSTRUCTION**

REV	DESCRIPTION	DRN	CHK	APP	DATE	PROF REGISTRATION
E	VARIOUS UPDATES - ISSUED FOR RMA CONSENT	MH	JP	JP	10.10.22	
D	ISSUED FOR RMA CONSENT	SS	AC	JP	19.08.22	
C	ISSUED FOR CONSENT - DRAFT	SS	AC	JP	20.04.22	
B	ISSUED FOR CONSENT - DRAFT	SS	AC	JP	09.12.21	
A	ISSUED FOR DBC	SS	AC	JP	18.06.21	

NO.	DATE	BY	DESCRIPTION
1	18.06.21	Nolan Naidoo	DESIGNED
2	18.06.21	Gavin Smit	DRAWN
3	18.06.21	Steve Sutton	CAD REVIEW
4	14.04.22	Nick Keenan	DESIGN CHECK
5	15.04.22	Andrew Craig	DESIGN REVIEW
6	10.10.22	Jamie Povall	APPROVED

Client:




**WAKA KOTAHI**  
**OTAKI TO NORTH OF LEVIN PROJECT**

DRAINAGE LAYOUT PLAN - INDICATIVE  
 SHEET 23

Status Stamp	<b>FOR CONSENT</b>
Date Stamp	<b>10.10.22</b>
Scale	1 : 2000 (A3)
Drawing No.	310203848-01-300-C1022
Rev.	<b>E</b>

pw:\stntec-ap-pw-bentley.com\stntec-ap-pw-01\Documents\New Zealand Clients\NZTA (New Zealand Transport Agency)\310203848 - Otaki to North of Levin DBC\01 - O2NL\300 - Stormwater\310203848-01-300-C1022



**LEGEND**

—	EXISTING PROPERTY BOUNDARY	—	EXISTING STREAM	⊙	HEADWALL WITH RIP RAP
- - -	PROPOSED DESIGNATION BOUNDARY	⊙	IMPACTED STREAM	⊙	SCRUFFY DOME
⊙	REALIGNED STREAM (INDICATIVE DESIGN)	⊙	CLEAN OPEN CHANNEL	⊙	MANHOLE
⊙	CLEAN LINED CHANNEL	⊙	ROAD RUNOFF CHANNEL	⊙	CATCH PIT
⊙	VEGETATED SWALE	⊙	CULVERT WITH ID IF SHOWN	⊙	MANHOLE CATCH PIT
⊙	STORMWATER PIPE	⊙	POND INLET/OUTLET	⊙	SCOUR PROTECTION
⊙	SWALE TO SWALE	⊙	SW	⊙	SPOIL SITE OPTION (INDICATIVE EXTENT)
⊙	CULVERT WITH ID	⊙	36.6	⊙	MATERIAL SUPPLY SITE (INDICATIVE EXTENT)
⊙	SW	⊙	36.6	⊙	CUT AREA
⊙	SW	⊙	36.6	⊙	FILL AREA
⊙	SW	⊙	36.6	⊙	POSSIBLE PROPERTY ACCESS ROUTE

SCALE 1:2000 (A3)

REV	DESCRIPTION	DRN	CHK	APP	DATE
E	VARIOUS UPDATES - ISSUED FOR RMA CONSENT	MH	JP	JP	10.10.22
D	ISSUED FOR RMA CONSENT	SS	AC	JP	19.08.22
C	ISSUED FOR CONSENT - DRAFT	SS	AC	JP	20.04.22
B	ISSUED FOR CONSENT - DRAFT	SS	AC	JP	09.12.21
A	ISSUED FOR DBC	SS	AC	JP	18.06.21

DESIGNED	Nolan Naidoo	18.06.21
DRAWN	Gavin Smit	18.06.21
CAD REVIEW	Steve Sutton	18.06.21
DESIGN CHECK	Nick Keenan	14.04.22
DESIGN REVIEW	Andrew Craig	15.04.22
APPROVED	Jamie Povall	10.10.22

SURVEYED		
DESIGNED	Nolan Naidoo	18.06.21
DRAWN	Gavin Smit	18.06.21
CAD REVIEW	Steve Sutton	18.06.21
DESIGN CHECK	Nick Keenan	14.04.22
DESIGN REVIEW	Andrew Craig	15.04.22
APPROVED	Jamie Povall	10.10.22
PROF REGISTRATION:		

Client:

WAKA KOTAHI  
OTAKI TO NORTH OF LEVIN PROJECT

DRAINAGE LAYOUT PLAN - INDICATIVE  
SHEET 24

Status Stamp	<b>FOR CONSENT</b>
Date Stamp	<b>10.10.22</b>
Scale	1 : 2000 (A3)
Drawing No.	310203848-01-300-C1023
Rev.	<b>E</b>

pw:\stamtec-ap-pw-bentley.com\stamtec-ap-pw-01\Documents\New Zealand Clients\NZTA (New Zealand Transport Agency)\310203848 - Otaki to North of Levin DBC\01 - O2NL\300 - Stormwater\310203848-01-300-C1023